

ECRYL® MASSIV

Smooth acrylic coating with short cure time



Ecryl® Massiv is an acrylic-based flooring for light to medium-heavy loads in both public and industrial environments.

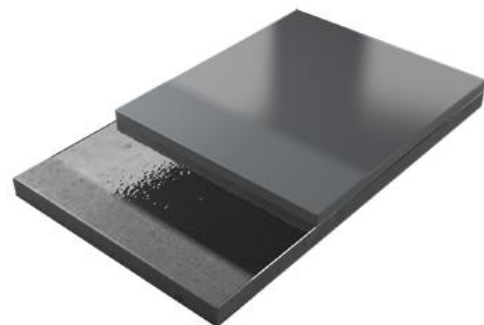
Ecryl® Massiv is smooth, solid and self-leveling. The finished floor is durable, non-porous and impervious to liquids. The coating can be made in most colors, with a layer thickness of 2-5 mm depending on the load.

Ecryl® Massiv is installed quickly and safely even at temperatures below freezing. The curing time after the last working step is about 2 hours, which means that the floor can often be used on the same day.

Ecryl® Massiv has a silky matte finish, good chemical resistance, and good UV resistance.

Ecryl® Massiv is adapted for use in:

- Food industry
- Process industry
- Shops
- Warehouses
- Laundry rooms



PROPERTIES ECRYL MASSIV

Adhesion	Good adhesion to clean concrete.
Compr. Strength	Strengthens the concrete substrate and transfers loads.
Abr. resistance	Good resistance against intense rolling and abrasive traffic.
Permeability	The seamless coating is free from pores and impervious to liquids.
Chemical resistance	Resistant against common industrial chemicals. Good resistance to diluted organic acids, inorganic acids, and alkali. Limited solvent resistance.

Substrate and conditions

The concrete must be fully cured, RH max 93% and laitance removed by diamond grinding or blasting. The concrete surface should have a tensile strength exceeding 1.5 MPa and should be dry, dust-free and well cleaned. Asphalt and bitumen should be grinded or milled off.

Small cavities and cracks in the substrate must be repaired with epoxy or acrylic products, cement mortars are not used in thin layers.

The Ecryl products in the coating system are 2-pack products and must be mixed thoroughly before application. The mixing proportions are important and therefore batch-packed material should not be parted. Pot-life is 10-15 minutes dependent on product and temperature. Base, hardener and filler material should be room temperature before use.

Construction Ecryl® Massiv 3 mm

Primer: Ecryl® Primer: 0,3 – 0,5 kg/m²

Sand: Colored quartz sand 0,3-1,2: 0,3 kg/m²

Slurry: Ecryl® LPWW 1,2 kg/m² + pigment and colored quartz sand: 2,4 kg/m²

Topcoat: Ecryl® L2Top / Hardtop: 2 x 0,2–0,4 kg/m²

Curing time

The curing time is fast. Normally, the floor can be loaded 2 hours after the last operation. Full cure and chemical resistance is achieved after 5 hours.

Coating Thickness

The coating is usually carried out in 3-5 mm layer thickness. At > 4 mm layer thickness, the concrete support is strengthened against point loads.

Slipresistance

The coating can be made as slip-resistant if required, see Ecryl® Structure.

System properties

Appearance:	Silky matte surface
Compressive strength:	>45 MPa
Tensile strength:	> 15 MPa
E-modul:	2600 MPa
Break elongation, %:	1,1

Color

Ecryl Massiv can be made in most RAL colors.

Environment

A long working-life (10-25 years) and good function with tailor-made properties means that the coating is a long-term good environmental choice, with low costs of maintenance. See environmental declaration.

Seamless floors give dense surfaces and give rise to great hygienic and environmental advantages. The floor surface is easy to clean and the demand for chemicals for daily cleaning and maintenance, is reduced.

Hygiene at worksite

ECRYL products are 2-pack formulations of thermosetting plastic, which mean that only trained personnel are allowed to handle the products. Areas, where work with acryl is being performed, must be separated with signs and have a good ventilation. Other activities may not take place within the defined work area. The Ecryl products have a characteristic odor that can be experienced as a nuisance by persons unaccustomed to the odor. When applied, the odor can be perceived as tangible, but very rarely hygienic limit values are reached. The cured coating is of no hazard from a health or environmental point of view. See environmental declaration.

Adherence to local regulations for work with reactive plastics is necessary, see www.av.se (AFS 2015:43).

Maintenance

The coating is resistant to common used industrial cleaners and cleaning methods, including high-pressure cleaning.

See separate cleaning instructions.

After years of wear, reconditioning is possible with new surface top.

Eventually damaged or worn coatings are best repaired by authorized Ecryl entrepreneurs.

Guidance for projecting

Difficult environments often demand special pre-treatment or preparation. Ecryl AB offers guidance and technical service for the right choice of coating in order to fulfil demands in different environments.

Experience and knowledge are needed for an adequate result and we work together with authorized Ecryl entrepreneurs.

General information

Contact Eradur AB for questions about the area of use, chemical resistance and application conditions.

Description text, example

MHG	Ecryl® Massiv, Color RAL 7035, thickness 3 mm. Coved skirting 100 mm, radius 50 mm, mass as the floor coating. Sveff's quality documentation must be followed. Supplier Eradur AB. Execution according to the supplier's instructions mass as the floor coating.
-----	--